



CRANESAFE Technologies

Is a good name with a great future.
We will do better tomorrow than yesterday.

CRANESAFE Technologies, the reputed indigenous manufacturer of Crane Monitoring System. Regardless of make of the crane or model, **CRANESAFE** Technologies have the expertise to provide a solution for the specific application.

Brand **CRANESAFE** is all about 'Cranes'. We are known for Genuine, Customized & Appropriate solution to Crane problems. We are also well known for our timely service commitments.

CRANESAFE Technologies also provides services for the critical problems in Hydraulics, Pneumatics & Electronics for any type, any make of the crane. Total Hydraulic conversion & Total Electronic conversion of a crane now becomes our assets.

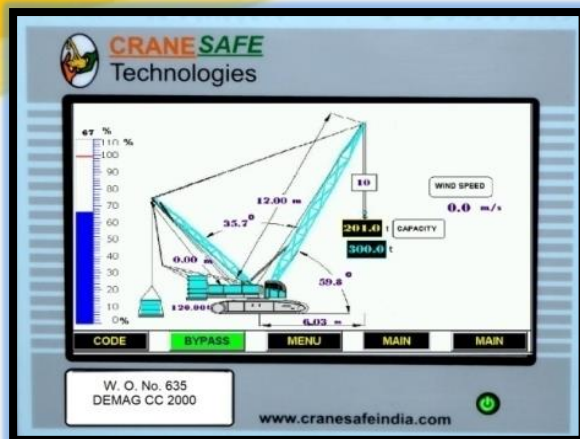
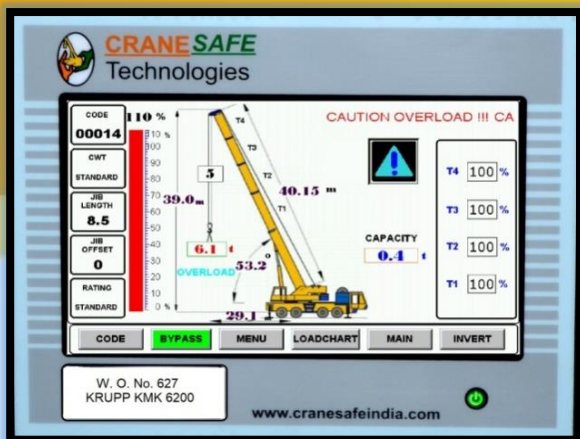
Customer satisfaction & Crane health are the key factors of our work nature.

- ❖ **PINNACLE 2014 Safe Load Indicator System for**
 - **Telescopic Crane**
 - **Lattice Crane**
- ❖ **Safe Load Indicator System for Pick & Carry crane**
- ❖ **PINNACLE 2014 Crane Control & Crane Guide System for**
 - **Telescopic Crane**
 - **Lattice Crane**
- ❖ **Slip-Ring Boom length Detector Assembly**
- ❖ **Multiple Boom Length Detector assembly**
- ❖ **Wind Sensor / Anemometer**
- ❖ **Miniature Pump Assembly for Boom Lock**



www.cranesafeindia.com

PINNACLE 2014 Safe Load Indicator System (SLI)



Graphical Touch Screen Display

- Displays: Rated Load, Boom Length, Tele percentage, radius, Hook Load, boom Angle, Hour meter, Text Messages & Error Messages.
- Anti Two Block, Approach Overload Alarms.
- Provides Quick reference on the percentage of load from 10% to 110% on Bar-graph.
- Alerts the operator when the crane reaches its limit. Motion Cut Available.
- System is user Friendly & Simple
- Self Diagnostics Provides Audio - Visual system under unsafe condition with human voice in Hindi & English (Optional)



Pinnacle 2014 SLI for Telescopic Crane



Pinnacle 2014 SLI for Lattice Crane

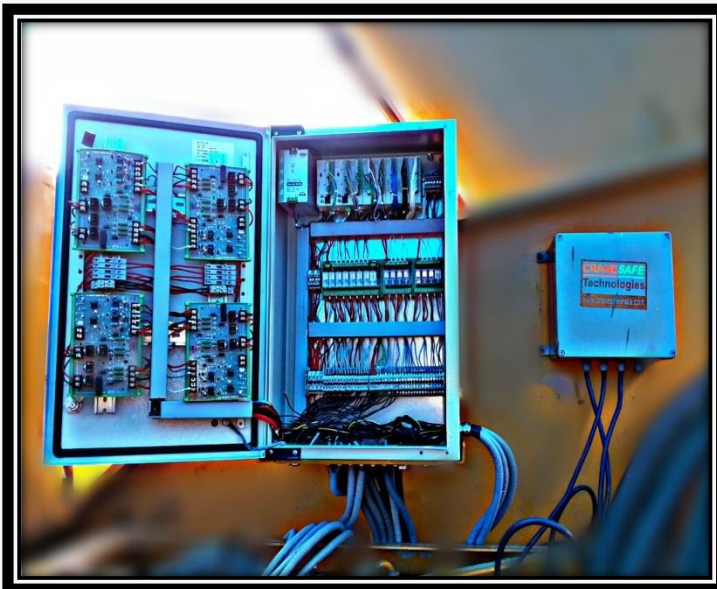


- Graphical Display & PLC Based System has been designed by the persons having three decades of experience of field operations of various makes and models of Cranes.
- This system has become a better choice for customer due to its proven hardware & User-friendly software.

PINNACLE 2014 Crane Guide and Crane Control System



Tele-control panel with Graphical Display



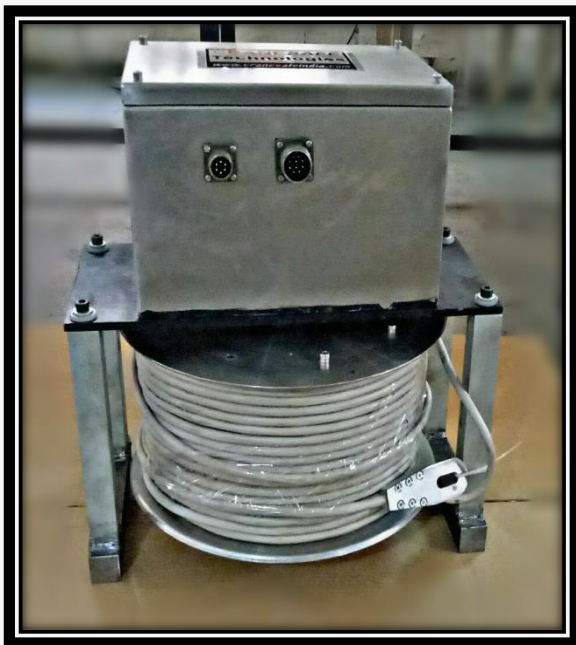
Crane Control & Tele-matic Control panels

- Provides complete crane control for crawler crane, telescopic cranes
- It consists of combination of Input and output cards
- Variable Pump control, spool valve control
- Relay Logic
- Tele-logic for lock unlock
- Tele-matic control (gripper control)
- Speed setting for individual operation is provided
- Front panel with indication for lock-unlock and position & Graphical Display
- User friendly diagnostic procedure

Boom Length Detector with Slip-Ring



Multiple Boom Length Detector assembly



Slip-Ring Boom length Detector Assembly

- Designed for proportional hydraulic crane booms and non-proportional booms with a maximum boom extension of 147.67 ft (45 m)
- Cable end can be terminated at the end of the first telescoping section on proportional boom
- The Cable Reel can be left or right hand cab mounted, the Length sensor will automatically adjust its orientation
- BALD is pre-calibrated, and can displays the length automatically.
- Combination of two transducers in a single unit.
- Length sensor is driven by gear combination.

The enclosure of length sensor & angle sensor is IP – 65 Graded.

Other Crane Products



**Wind Velocity /
Anemometer**



Miniature Pump Assembly for Boom Lock



Guide Rollers

Safe Load Indicator for Pick & Carry cranes



- Displays: Rated Load, Boom Length, radius, Hook Load, boom Angle, Hour meter, Text Messages & Error Messages.
- Anti Two Block, Approach Overload Alarms.
- Provides Quick reference on the percentage of load from 10% to 100% on LED-graph.
- Alerts the operator when the crane reaches its limit. Motion Cut Available.
- Suitable Design of A2B Limit Switch for Pick & Carry Travelling mode.
- Simple Membrane keypad interface for Duty Code Selection, Falls Setting & Unit Selection.



CRANE SAFE
Technologies



TRULY VERSATILE!

Information, descriptions and specifications are subject to change without notice.

For Further Information, Please contact:

Works:

CRANE SAFE Technologies

**Unit No:-G7, B Wing, Udyog Bhavan 2,
Plot No:-3, Ambernath Industrial Park,
Additional MIDC, Near Anand Nagar,
Ambernath (E) Pin No: - 421506
Maharashtra, India**

Phone : +91-251-2821214

Mob : +91 9323030092

: +91 9820248680

Telefax : +91-251-2821214

**E-mail : cranesafeindia@gmail.com
sales@cranesafeindia.com**



www.cranesafeindia.com